



# ViewWell

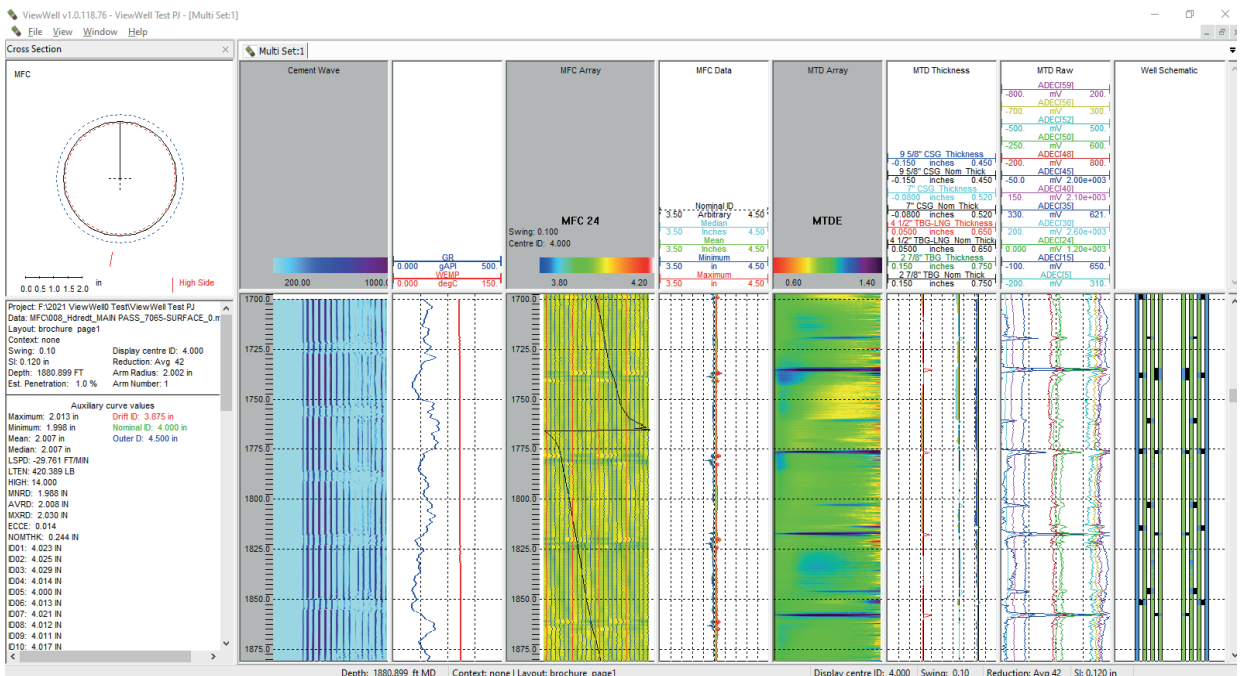
## Integrated processing and visualization software for Well Integrity Logging

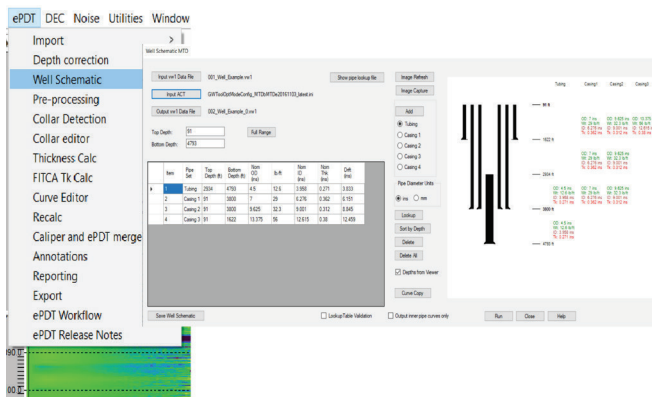
ViewWell™ offers a comprehensive view of well integrity data through a consolidated analysis and visualization of cement, casing and tubing conditions. It is an integrated, modular platform offering different processing workflows for analyzing a growing range of Well Integrity measurements.

The platform supports GOWELL's portfolio of Well Integrity tools and can be customized for client specific processing measurements or workflows.

The platform features include a multi-track viewer able to display curves, array data such as waveforms or VDL and the well schematic. The software allows for importing of multiple data formats such as LAS and DLIS and basic data handling such as depth corrections, merge and math functionality. There is a 3D viewer, API log plotting capability, log annotation and a standalone distributable viewer for clients.

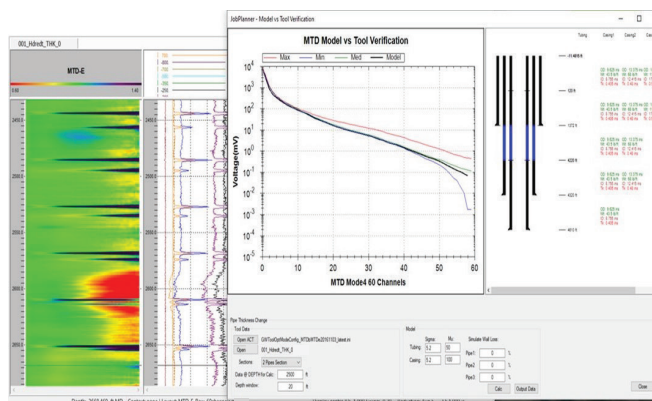
### Multi-track viewer showing an example of Caliper, MTD and RBL Data





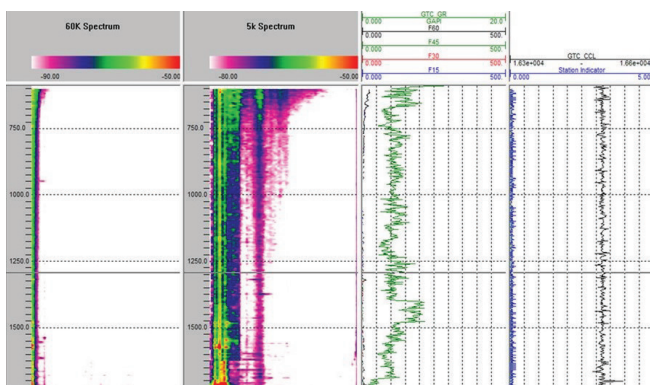
## MODULAR

ViewWell™ platform has add-in modules that guides the analyst through a tool specific workflow process log data. These workflows include import, data calibration, pre-processing, collar detection, data analysis and reporting. Currently available modules include Multi-Finger Calipers, MTD-B/E/G, ePDT, Passive Acoustics, Cement and DEC.



## ANALYSIS

The platform includes a range of statistical methods to analyse Wall Loss, Penetrations and Restrictions for quantitative interpretation. We incorporate where appropriate forward modeling of our tools to allow for job planning, data quality control, feature analysis and inversion processing.



## CUSTOM PLUGINS

ViewWell™ is an inherently modular platform upon which to build tailored plugins. We are rapidly expanding the range of available modules and are happy to work with customers to build or integrate additional plugin for their specific needs. GOWell has a long and successful history of collaborating with our customers to deliver customized modules and products.

## REPORT

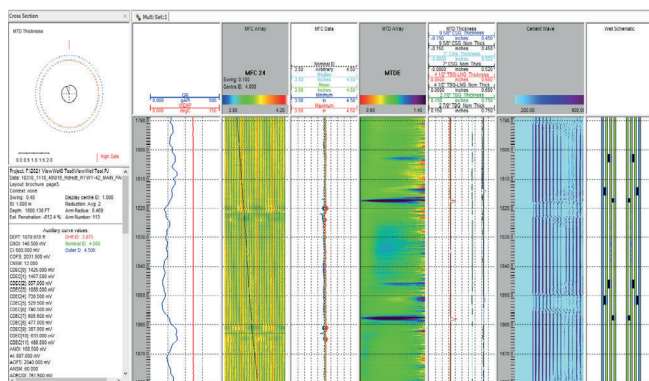
ViewWell™ includes a comprehensive set of tools for generating API style logs, LAS outputs and custom reports. The reporting module allows the analyst to generate structured written reports in WORD, PDF and TIFF formats which include bar charts, histograms, joint tables, log sections and 3D views. Reporting includes options to build specialist plots such as Global Penetration Cluster and Pit Depth Ranking Plots.

## SUPPORT

ViewWell™ is actively in development with regular improvement and feature updates. The platform will support GOWell's Well Integrity portfolio of tools and new technology together with support for third party technologies and custom modules. GOWell's global team of in-house analysts are available for training and provide our clients with technical support around the clock.

## FREE VIEWER

ViewWell™ viewer is a license-free distributable package for clients. This software can be packaged with a project dataset which allows clients to interactively view their data with both 2D and 3D viewers. This helps easily and quickly communicate visually the data and results. The analyst can pre-define views which opens immediately with ViewWell™ viewer and is shareable across multiple users at the client company.

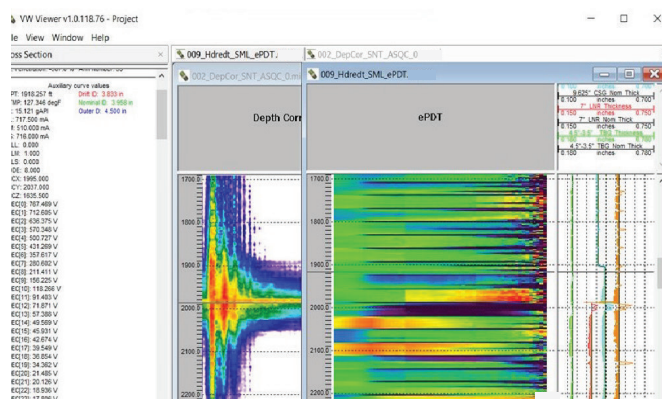


Welcome to the GOWell Customer Portal

For assistance →

You may download various GOWell documentation or confidentially share files with GOWell

To share files select menu option **Upload** to upload your raw data to GOWell or **Download** the customer deliverables from GOWell - please notify us after completing your upload of raw data for further handling



## Highlight of ViewWell's Unique Features

### Data Viewer

- ▶ 2D and 3D visualization
- ▶ Range of curve options including line styles, color, weight and shade
- ▶ Flexible data reduction: Max, Min., Avg and Abs
- ▶ Multi-layout and tabbed displays
- ▶ Ease of saving and loading custom displays
- ▶ Pre-defined or customizable text annotations
- ▶ Well Schematic and cross-section displays
- ▶ Auditable Processing history

### Report

- ▶ Ability to create and include Logs, Histograms, Bar charts, cross-sections, images (scanned or otherwise), API style log displays
- ▶ User friendly ability to customize text, headers, footers and logo
- ▶ Generate reports in .docx, .pdf or .tiff files
- ▶ Define tables, layouts and reporting templates able to be saved for future reports
- ▶ API styles of selected log data
- ▶ Join analysis table for carry out pipe penetration or wall loss analysis

### Supported Technology

#### GENERAL DATA HANDLING

- ▶ Depth Corrections
- ▶ Curve Editing and Filtering
- ▶ Merge and Splice log passes
- ▶ Math Operations
- ▶ Resampling
- ▶ Histograms
- ▶ Hole Volume Calc

#### MFC PROCESSING

- ▶ Data derived re-calibration
- ▶ Robust least squares centralization
- ▶ Multi-arm statistics
- ▶ Azimuth driven orientation to upside  
Calculate and optionally remove best for
- ▶ cross section ellipse
- ▶ Automatic pipe end detection & interactive edit
- ▶ Pipe-by-pipe statistical analysis
- ▶ Pipe grading
- ▶ Global penetration and pit cluster analysis

#### MTD PROCESSING

- ▶ MTD Collar Detection
- ▶ VDL Normalization
- ▶ Thickness Calculation
- ▶ Job planner and forward modelling
- ▶ Multi-pipe annotation

#### ePDT PROCESSING

- ▶ ePDT preprocessing collar detection and VDL processing
- ▶ Thickness Calculation
- ▶ Modeling and QC

### Data Import

- ▶ LAS, DLIS and ASCII supported data formats

### Data Export

- ▶ User customizable export data in LAS (2.0 format), ASCII and DLIS formats
- ▶ ViewWell files presented to client with license free viewer without installation
- ▶ Build Multi-view Batch scripts for free viewer

### Coming Soon

- ▶ Support for GOWell's Stationary Noise Tool (SNT)
- ▶ Support for GOWell's Deformation and Eccentricity Tool (DEC)
- ▶ Support for GOWell's RBL and other CBL tools