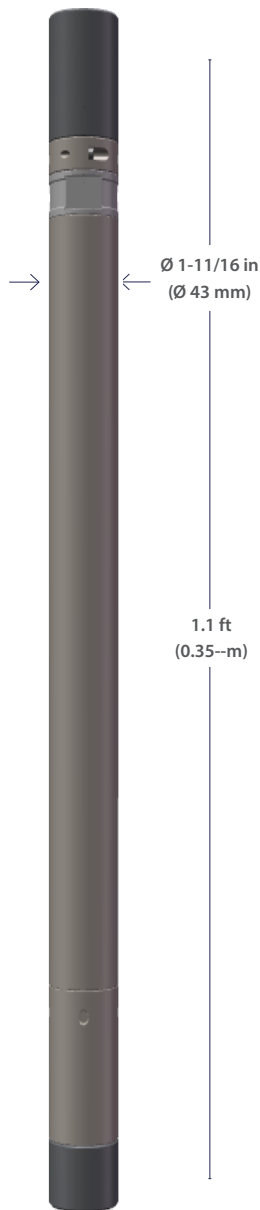




Pegasus Protocol Adapter (XPA43J-A)

GOWell has developed an adapter module (XPA43J-A) that allows GOWell's Pegasus series tools to be fully compatible with the leading Industry standard toolbus. One or more Pegasus series tools can be connected below a XPA43J-A. Once the adaptor is in place, any combination of 3rd party tools, either SRO or Memory, can be connected above the adapter.



XPA43J-A

FEATURES

Protocol Conversion

- Converts GOWell Pegasus tool's CAN protocol to leading industry standard tool bus

Mechanical Conversion

- Adapts GOWell Pegasus tool's 13 pin connection to 3rd party tools mono conductor connection.

APPLICATIONS

- Enables flexibility to use GOWell's Pegasus tools while retaining your existing downhole tool investment.
- Provides a transition pathway to use Pegasus series downhole tools.

SPECIFICATIONS

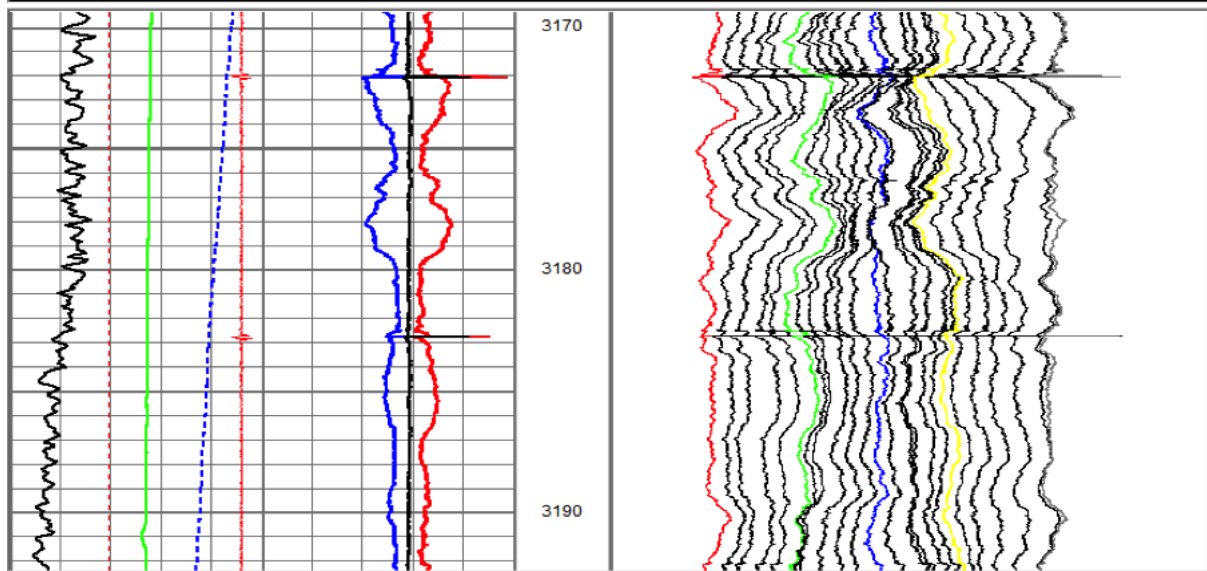
P/N 300001560	
GENERAL SPECS	
Maximum Operating Pressure	14,503 (100MPa)
Maximum Operating Temperature	347°F (175°C)
Instrument Diameter	1-11/16 in. (43 mm)
Length	1.1 ft. (0.35 m)
Weight	5.5 lbs (2.5 kg)
Top Sub	Single Pin Connector
Bottom Sub	13 Pin Connector



Pegasus Protocol Adapter (XPA43J-A)

Log Examples showing GOWell's Pegasus MFC24 and GTC tools connected below a 3rd party telemetry tool and their acquisition system

-10	MITDEV (deg)	90	50	MAXRAD (mm)	70	55	FING01 (mm)	95
0	MITROT (deg)	360	50	MINRAD (mm)	70	54	FING02 (mm)	94
-50	LSPD (m/min)	50	50	AVERAD (mm)	70	33	FING23 (mm)	73
10000	CCL	20000				32	FING24 (mm)	72
0	GR (GAPI)	200						



-10	MITDEV (deg)	90	50	MAXRAD (mm)	70	55	FING01 (mm)	95
0	MITROT (deg)	360	50	MINRAD (mm)	70	54	FING02 (mm)	94
-50	LSPD (m/min)	50	50	AVERAD (mm)	70	33	FING23 (mm)	73
15000	CCL	19500				32	FING24 (mm)	72
0	GR (GAPI)	200						

