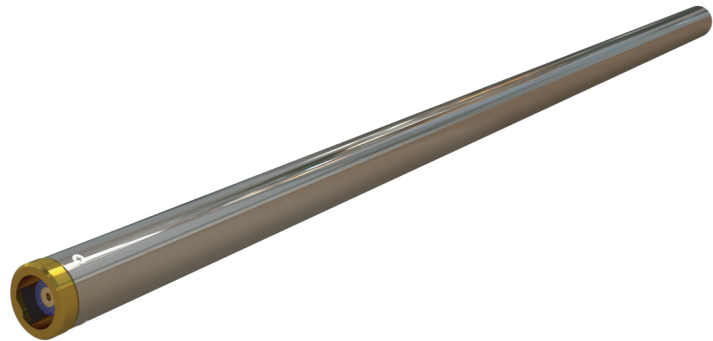


# GOWell GO7 - 100517190

Part Number	GOWell GO7 - 100517190.
Nominal Voltage	27.51V.
Nominal Capacity	14Ah.
Li Contents (g)	28.7g.
Tube	Silicone.
Connector	Threaded End.
Chemistry	Lithium Sulfuryl Chloride (PMX Range).
Rated Temp in Use (C)	165°C.
Length (mm)	802mm.
OD (mm)	27mm.



Storage	<p>Store at room temperature. Do not store near combustible materials. Do not store in high humidity environments.</p> <p>Never stack heavy objects on top of battery boxes. Keep batteries in original packaging until use and do not expose them to unnecessary or excessive handling.</p>
Restrictions on use	<p>Do not short circuit or expose to temperatures higher than the maximum temperature rating specified by the manufacturer.</p> <p>Do not recharge, over charge or crush any cell or pack. Ensure cells and batteries are safely handled and stored. Do not discharge below 14volts.</p>
Passivation	<p>Passivation layers occurs within the cells in the pack when its stored at higher/uncontrolled temperature for a prolong time. Passivation is great if not used for a long time because the passivation layer forms in the surface of the anode protects the anode from reaction resulting in a long shelf-life. Depassivation will need to be done to the pack before deployed to operation if not then the pack will experience voltage delay under any load. To reduce the chances of passivation need to be stored at controlled temperature @ ~23C.</p> <p>Depassivation procedure specific for <b>GOWell GO7 – 100517190</b>: Apply 150mA @ RT (23°C) for 20mins or 30-40mins in colder weather temperature. Pack voltage should become stable within the time duration. If it fails to de-passivate at certain time, then repeat the test after 2mins rest period.</p>
Transport	<p>UN38.3 (UN3091) Approved.</p> <p>Transportable by Land, Sea and Air (always declare and check with your courier).</p>



MiddleEast@gowellpetro.com



GOWell\_GO7\_100517190\_Datasheet\_01\_2022  
 Technical specifications are subject to change without notice.  
 E & OE Issue A.  
 Contact your nearest GOWell representa ve